



DM 9600 CHP

Precision - Manometer

for numerous*
pressure-, differential pressure- and
temperature-measurements at CHP
plants

P | ΔP | T | ΔT



*engine inlet pressure, boost pressure, intercooler differential pressure, oil-/water pressure, crankcase pressure, exhaust back pressure



- Data transfer via Bluetooth to App
- Long-term stable pressure sensor with a range of up to 10 bars (145 psi)
- Twin K-type thermocouple sockets for temperature measurements
- Optional gas leakage detector
- Modern, rugged unit w/ Bluetooth, color touch screen, USB, SD-Card, etc.



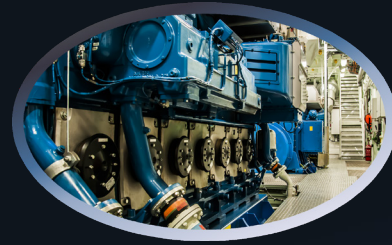
DM9600 CHP - Set
complete in a practical transport case,
incl. ext. pressure transmitter and
pressure hose

DM 9600 CHP

Precision - Manometer

Key Features & Functions

- Electronic, long-term stable pressure sensor for up to 10 bars (145 psi)
- Twin K-type (NiCrNi) thermocouple temperature sockets
- Indication in hPa / mbar / bar / psi / mmHg / inchHG / cmH2O / inchH2O
- Temperature indication optionally as °C or °F
- Bluetooth for wireless data transfer to MRU4u app (Android & iOS)
- AUX connector for external pressure transmitter or gas sniffer
- USB interface for cable data transfer and battery charger
- Internal data storage for thousands of measurements!
- High volume data storage to SD card (CSV format)
- Min/Max recording, programable average value
- Automatic and continuously monitoring of pressure/ negative pressure
- Stainless steel fast coupling connectors
- Brilliant 2,8" TFT touchdisplay
- Fiberglass reinforced housing with integrated magnets
- High energy Li-Ion battery, Auto-Off-Function
- Wall plug battery charger with USB cable



Technical Data

Parameter	Range	Accuracy
Engine inlet pressure	100 ... 200 mbar	± 1 mbar or 1 % reading
Boost pressure	1 ... 4 bar	± 1 mbar or 1 % reading
Intercooler differential pressure	200 ... 500 mbar	± 1 mbar or 1 % reading
Exhaust back pressure	20 ... 200 mbar	± 1 mbar or 1 % reading
Crankcase pressure	0 ... 200 mbar	± 1 mbar or 1 % reading
Oil-/Water pressure (ext. transmitter)	1 ... 9 bar	± 20 mbar or 1 % reading
Temperature	32 ... 1,832°F (0 ... 1,000 °C)	± 2°F (1 °C) or 1 % reading
Gas leakage	5 ... 10,000 ppm / 20...100% LEL	
Temperature variation	32 ... 122°F (0 ... 50°C)	± 0.5%

General technical data			
Display	2.8" color TFT, touchscreen	Interfaces	Mini-USB, Bluetooth, IR for printer, µ-SD card
Measuring units	mbar/ bar/ hPa/ psi/ mmHg/ inchHG/ cmH2O/ inchH2O	Data storage	internally 10.000 data sets or ext. µ-SD card
Max. Pressure range	internal sensor: 0...10 bar (145psi)	Data transfer	to MRU4win PC-software or MRU4u App
Zero point	automatic	Internal power supply	Li-Ion battery for appr. 20h mains free operation
Temperature	two K-type (NiCrNi) sockets	Mains power supply	wall plug USB-charger 100...240 Vac, 50...60 Hz
AUX socket	for ext. pressure transmitter and leakage detector	Dimensions / Weight	3.23" x 6.65" x 1.42" (82 x 169 x 36 mm) / appr. 14 ounces (400 g)

Data subject to change without notice.



MRU Instruments, Inc.
 Humble, TEXAS 77396 USA
 Tel.: +1 (832) 230-0155
 Info@mru-instruments.com
 www.mru-instruments.com

MRU Representative: